

# Franklin County (NC)

## January 2009



County Profile Contact (919) 715-6374

Commerce Economic Development Contact (919) 733-4977

### Demographics

#### Population & Growth

	Population	Annual Growth Rate
2013 Total Population	64,142	2.3%
2008 Total Population	57,332	2.4%
2000 Total Population	47,260	
July 2007 Certified Population Estimate	56,456	
July 2007 Certified Population Growth	9,196	
July 2007 Certified Net Migration	7,449	

#### Urban/Rural Representation

		Urban/Rural Percent
2000 Total Population: Urban - inside Urbanized Area	856	1.8%
2000 Total Population: Urban - inside Urbanized Clusters	3,267	6.9%
2000 Total Population: Rural - Farm	1,112	2.4%
2000 Total Population: Rural - Nonfarm	42,025	88.9%

#### Estimated Population by Age

		Pop by Age, % Est.
2013 Median Age	40	
2008 Median Age	38	
2000 Median Age	36	
2008 Total Pop 0-19	15,396	26.9%
2008 Total Pop 20-29	6,797	11.9%
2008 Total Pop 30-39	8,142	14.2%
2008 Total Pop 40-49	9,606	16.8%
2008 Total Pop 50-59	7,960	13.9%
2008 Total Pop 60+	9,431	16.4%

### Working Commuters, 2000 Census

#### Workers, Travel Time

Avg Travel Time, Not at Home	33
Workers Not Working at Home	21,789
Travel Time to Work: < 5 minutes	584
Travel Time to Work: 5-9 minutes	1,436
Travel Time to Work: 10-14 minutes	2,191
Travel Time to Work: 15-19 minutes	2,253
Travel Time to Work: 20-24 minutes	2,400
Travel Time to Work: 25-29 minutes	1,055
Travel Time to Work: 30-34 minutes	3,051
Travel Time to Work: 35-39 minutes	862
Travel Time to Work: 40-44 minutes	1,097
Travel Time to Work: 45-59 minutes	3,613
Travel Time to Work: 60-89 minutes	2,618
Travel Time to Work: 90+ minutes	629

#### Workers, By Transportation

Worker Mode, Base	22,248
Work at Home	459
Drove Car/Truck/Van Alone	17,439
Carpooled Car/Truck/Van	3,807
Bus/Trolley Bus	62
Streetcar/Trolley Car	0
Subway/Elevated	0
Railroad	0
Ferryboat	0
Taxicab	0
Motorcycle	19
Bicycle	4
Walked	221
Other Means	237

## Travel to Work

	Commuters	Percent by Residence
Worked in State/County of Residence	7,772	34.9%
Worked in State/Outside County of Residence	14,337	64.4%
Worked Outside State of Residence	139	0.6%

## Education

		Pop Age 25+, %
2007-08 Kindergarten-12th Enrollment	8,578	
2008 Average SAT score (2400 scale)	1,425	
2008 Percent of Graduates taking SAT	41%	
2006-07 Higher Education Completions	27	
2006-07 Higher Education Total Enrollment	842	
2008 Proj Education Attainment - At Least High School Graduate	29,880	77.2%
2008 Proj Education Attainment - At Least Bachelor's Degree	5,576	14.4%

## Housing

		Growth / Appreciation Est
2013 Total Housing	28,725	12.9%
2008 Total Housing	25,437	
2013 Median Value of Owner Occupied Housing	134,831	7.3%
2008 Median Value of Owner Occupied Housing	125,713	46.9%
2008 Owner Occupied Housing	17,079	
2008 Renter Occupied Housing	4,833	
2008 Total Households	21,912	
2000 Median Year Housing Structure Built	1,982	

## Income

		Growth Estimated
2013 Median Family Income	\$64,565	14.1%
2008 Median Family Income	\$56,584	27.0%
2000 Median Family Income	\$44,541	
2013 Median Household Income	\$56,133	13.9%
2008 Median Household Income	\$49,291	26.5%
2000 Median Household Income	\$38,964	
2008 Median Disposable Income	\$39,119	
2008-2013 Per Capita Income: Annual Compound Growth Rate %		2.2%
2013 Per Capita Income	\$24,386	11.4%
2008 Per Capita Income	\$21,896	24.7%
2000 Per Capita Income	\$17,562	
2000 Total Pop with Income Below Poverty Level	5,790	
2000 Percent of Pop with Income Below Poverty Level		12.6%

## Employment / Unemployment

	Year to Date	2007 Annual
Employment, 2008Q2YTD	26,581	26,323
Unemployment, 2008Q2YTD	1,837	1,187
Unemployment Rate, 2008Q2YTD	6.5%	4.3%
Announced Job Creation, Sept08YTD	163	173
Total Announced Investments (\$mil), Sept08YTD	\$39	\$8
Lost Jobs, Closings & Layoffs, Nov08YTD	807	63
Establishment Events, Closings & Layoffs, Nov08YTD	12	3

<b>Employment / Wages by Industry</b>	<b>2008 1st Qtr Employment</b>	<b>2007 Annual Employment</b>	<b>2008 1st Qtr Avg Weekly Wage</b>	<b>2007 Avg Weekly Wage</b>
Total All Industries	12,010	11,459	\$652	\$657
Total Government	2,478	2,324	\$628	\$659
Total Private Industry	7,515	9,135	\$678	\$656
Agriculture Forestry Fishing & Hunting	0	0	.	.
Mining	0	0	.	.
Utilities	0	0	.	.
Construction	1,341	1,209	\$613	\$661
Manufacturing	2,653	2,955	\$971	\$918
Wholesale Trade	434	431	\$785	\$837
Retail Trade	1,163	1,082	\$422	\$436
Transportation and Warehousing	66	63	\$803	\$868
Information	79	71	\$719	\$763
Finance and Insurance	124	121	\$811	\$690
Real Estate and Rental and Leasing	67	85	\$432	\$430
Professional and Technical Services	211	200	\$698	\$647
Management of Companies and Enterprises	0	0	\$0	\$0
Administrative and Waste Services	503	540	\$516	\$523
Educational Services	1,243	1,354	\$655	\$656
Health Care and Social Assistance	0	1,335	.	\$525
Arts, Entertainment and Recreation	44	42	\$183	\$217
Accommodation and Food Services	551	567	\$196	\$202
Other Services Ex. Public Admin	240	228	\$460	\$467
Public Administration	1,169	1,106	\$589	\$619
Unclassified	107	70	\$438	\$564

## Commercial/Retail/Industrial

### Local Businesses

2008 Available Industrial Buildings	49
2007 Establishments: Total Private Industry	1,000
2007 Establishments: Manufacturing	61

### Local Retail Business

2008 Total Retail Sales (With Food/Drink) (\$mil)	\$401.1
2008 Total Retail Businesses (With Food/Drink)	295
2008 Avg Sales/Business Total (with Food/Drink)	\$1,359,588

## Quality of Life

### Taxes

FY2008-09 Property Tax Rate per \$100 Value	\$0.8225
FY2007-08 Annual Taxable Retail Sales (\$mil)	\$313.5
2009 Tier designation	2

### Childcare

Sept 2008 Licensed Child Care Facilities	38
Sept 2008 Licensed Child Care Enrollment	1,310

### Weather

Annual Rainfall	48
Annual Snowfall	7
Average Annual Temperature	59
Average Annual High Temperature	72
Average Annual Low Temperature	48

### Healthcare Providers

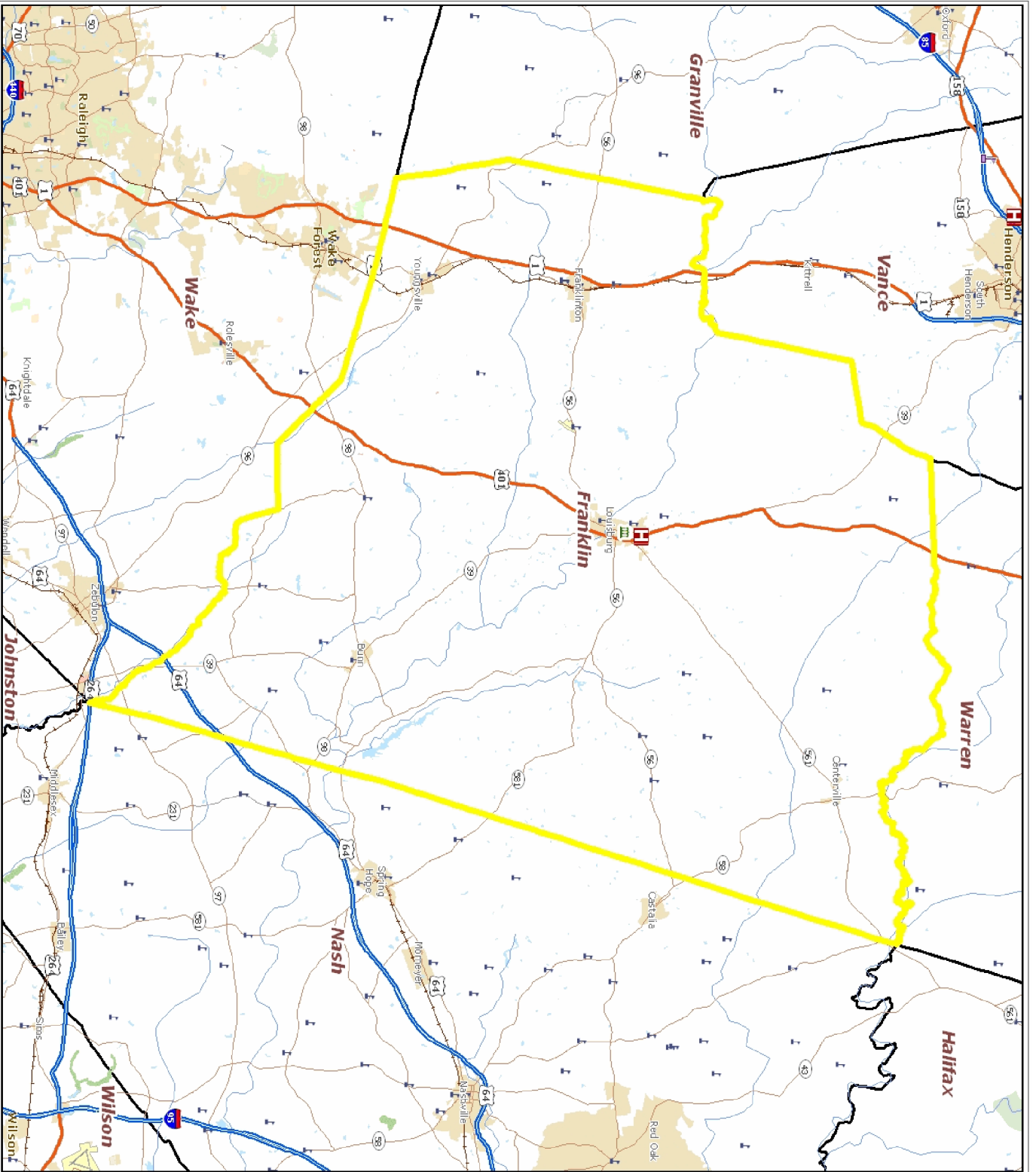
2006 Number of Physicians	33
2006 Physicians per 10,000 population	6
2006 RNs per 10,000 population	38
2006 Dentists per 10,000 population	1
2006 Pharmacists per 10,000 population	3

### Sources:

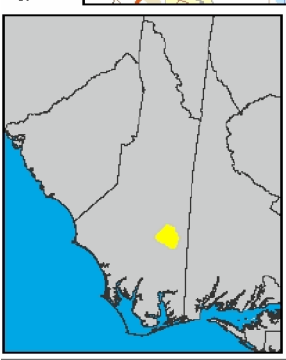
ESRI for demographics, working population, educational attainment, housing, income, crime, weather, and retail data. <http://www.esri.com>  
 NC Dept. of Education and various state education departments for SAT data by county system. <http://www.ncpublicschools.org>  
 US Dept. of Education, National Center for Education Statistics for higher education data. <http://nces.ed.gov/ipeds/>  
 NC Commerce for announced new jobs and investment, NC tiers, and number of industrial buildings. <http://www.nccommerce.com/en>  
 NC Employment Security Commission for lost jobs and affected establishments data. <http://www.ncesc.com>  
 NC Dept. of Health & Human Services for childcare data. <http://www.ncdhhs.gov/>  
 UNC Sheps Center for healthcare provider statistics. <http://www.shepscenter.unc.edu/>  
 US Bureau of Labor Statistics for employment and unemployment, wages and establishments by industry. <http://www.bls.gov>

### Notes:

Data are the latest available at the date the profile was prepared. SAT scores use the new scoring system including a writing test for a perfect score of 2400 and represent county systems. ESRI 2008/2013 data are projections. Some data may be available only for North Carolina. For further details or questions, please check the Data Sources Guide at <https://edis.commerce.state.nc.us/docs/bibliography/EDISdataGuide.htm>.



Prepared by North Carolina Department of Commerce,  
Division of Policy, Research & Strategic Planning, February 2008



- Legend**
- Hospital
  - Public University
  - Private University
  - NC Community Colleges
  - School
  - Limited Access
  - Highway
  - Major Road
  - Local Road
  - Minor Road
  - Other Road
  - Ramp
  - Ferry
  - Pedestrian Way
  - Railroads (Local)
  - Airport Area
  - Stream
  - Intermittent Stream
  - Canal
  - Dam
  - National Park or Forest
  - State Park or Forest
  - Local Park or Recreation Area
  - Municipal Boundaries